

Greenmood

PRODUCT SPECIFICATION SHEET

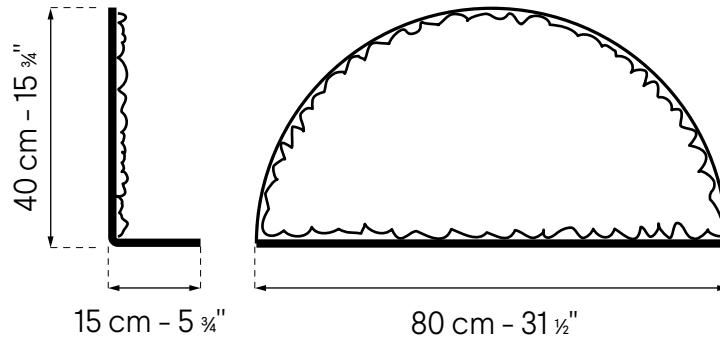
MOONY

- 1. SPECIFICATIONS
 - 2. FRAME FINISHES
 - 3. FILLINGS
 - 4. INSTALLATION MANUAL
-



1. SPECIFICATIONS

MOONY



Weight — Gross weight: 3,5 kg (7,7 lbs)



Materials — Aluminium sheet 3 mm (1/8")



Finishes — Powder coatings: Matte Black – RAL 9005



Fillings — Reindeer Moss (Lichen)
Ball Moss
Wool Felt

2. FRAME FINISHES

MATTE BLACK Powder coating



Texture — Fine texture



Gloss Level — 20±5



Color — 9005

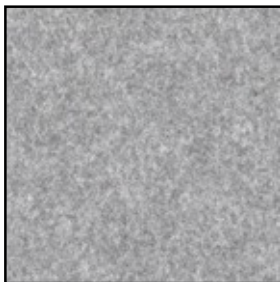
3. FILLINGS (1/2)

REINDEER MOSS (Lichen)




-  **Origin** — Handpicked in Europe (Scandinavia)
-  **Security** — Naturally Fire-retardant (ISO 11925-2, certificate available)
Class: B-S2-d0
-  **Durability** — 100% Maintenance free (avoid direct sunlight)
Keeps its form, color & texture for 7 to 10 years
-  **Health** — Non-toxic
Non-allergen
-  **Colors** — Available in various colors

NATURAL WOOL FELT



-  **Thickness** — 5 mm (3/16")
-  **Color** — Light Grey



-  **Thickness** — 5 mm (3/16")
-  **Color** — White